



Lower Columbia  
Estuary  
Partnership

**Project Review Committee,  
Science Work Group  
Site Visit Schedule**

**January 21 & 24, 2014**  
**Estuary Partnership Office**  
**811 SW Naito Parkway, Suite 410**  
**Portland, OR 97204**

**Day 1 Site Visit (Tuesday, January 21st)**

Meet at EP for vanpool	8:00
<i>Travel to Elochoman Project</i>	8:15 – 9:45
Elochoman site visit	9:45 – 10:45
<i>Travel to Astoria/Lunch</i>	10:45 – 12:45
<i>Travel to Skipanon Project</i>	12:45– 1:00
Skipanon site visit	1:00 - 2:00
<i>Return to EP</i>	2:00 – 4:00

**Day 2 Site Visit (Friday, January 24<sup>th</sup>) **\*\*bring a sack lunch-cooler will be available\*\*****

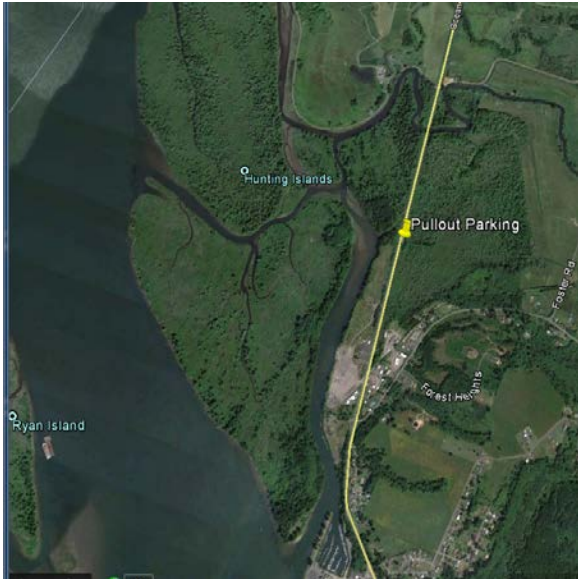
Meet at EP for vanpool	8:00
<i>Travel to Wahkeena Creek Project</i>	8:15 – 9:00
Wahkeena site visit	9:00 – 10:00
<i>Travel to North Unit</i>	10:00 – 10:45
North Unit Phase 2 site visit/Lunch	10:45– 12:45 (Note: there is a cumulative hour of additional 4WD travel to access the site-4WD transport provided by sponsor)
<i>Return to EP</i>	12:45 – 1:30

If you are running late, please contact Daniel Evans at 503-789-7355 (mobile).  
Directions for those driving themselves on reverse.

## Day 1

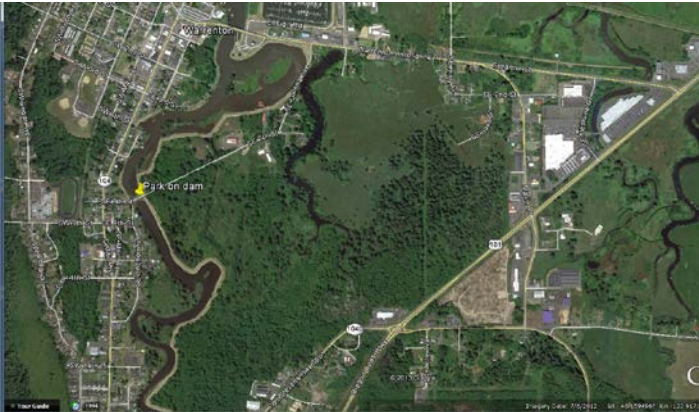
Elochoman – Scott McEwen, CLT (503) 701-5604

- 1) From Cathlamet, north on Hwy 4.
- 2) Pull out for parking is 1.3 miles north of Hwy 4/Hwy 409 junction in Cathlamet.



Skipanon – Madeline Dalton, CREST (763) 670-3705

- 1) West from Astoria across Youngs Bay on 101.
- 2) Veer right onto E. Harbor St/Astoria-Warrenton Hwy.
- 3) Left onto SE Galena
- 4) Right onto 7<sup>th</sup> St.
- 5) Park just east of dam.



## Day 2

Wahkeena – Chris Collins, LCEP (971) 645-2105

1. East from Portland on I-84
2. Take Exit 30 and drive into Benson State Recreation Area parking lot
3. Park immediately

North Unit Phase II – Tom Josephson, CREST (503) 954-5157

- 1) From Hwy 30, go over the Sauvie Island Bridge and head north.
- 2) Follow road for 2.2 miles
- 3) Turn right onto NW Reeder Rd. and head north
- 4) Follow Reeder Rd for approximately 12.5 miles. Go past the public beaches. Take the gravel road all the way to the parking lot at the end of the road

