

Lower Columbia Barrier Assessment

Optimizing Fish Passage in Washington State

Keith Marcoe

Lower Columbia Estuary Partnership

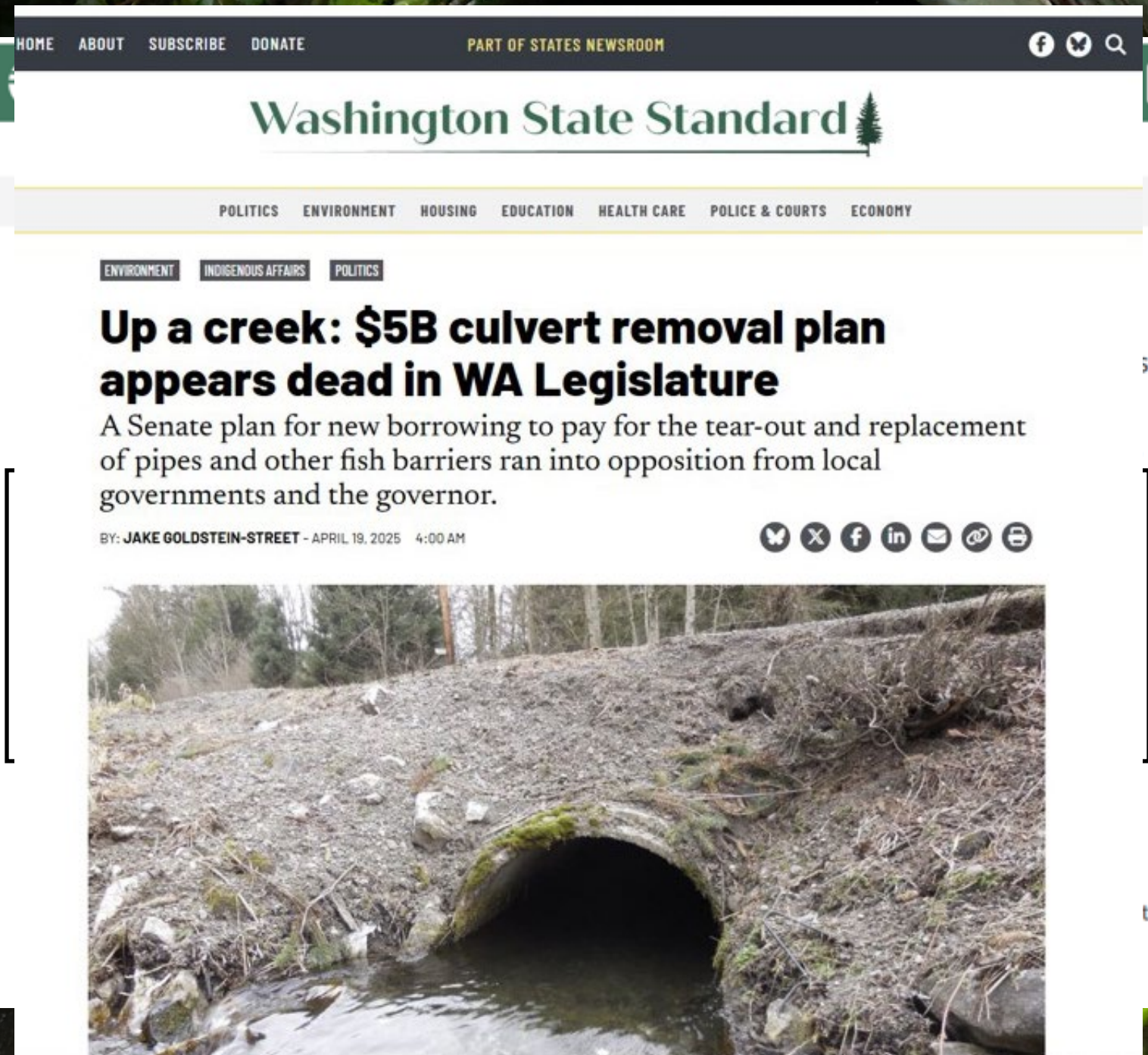
Amelia Johnson

Lower Columbia Fish Recovery Board



Fish Passage in Washington State

- Thousands of features block access to salmon habitat (50% in Lower Columbia)
- Legal mandate
- Uncertain funding
- ..Prioritization is vital



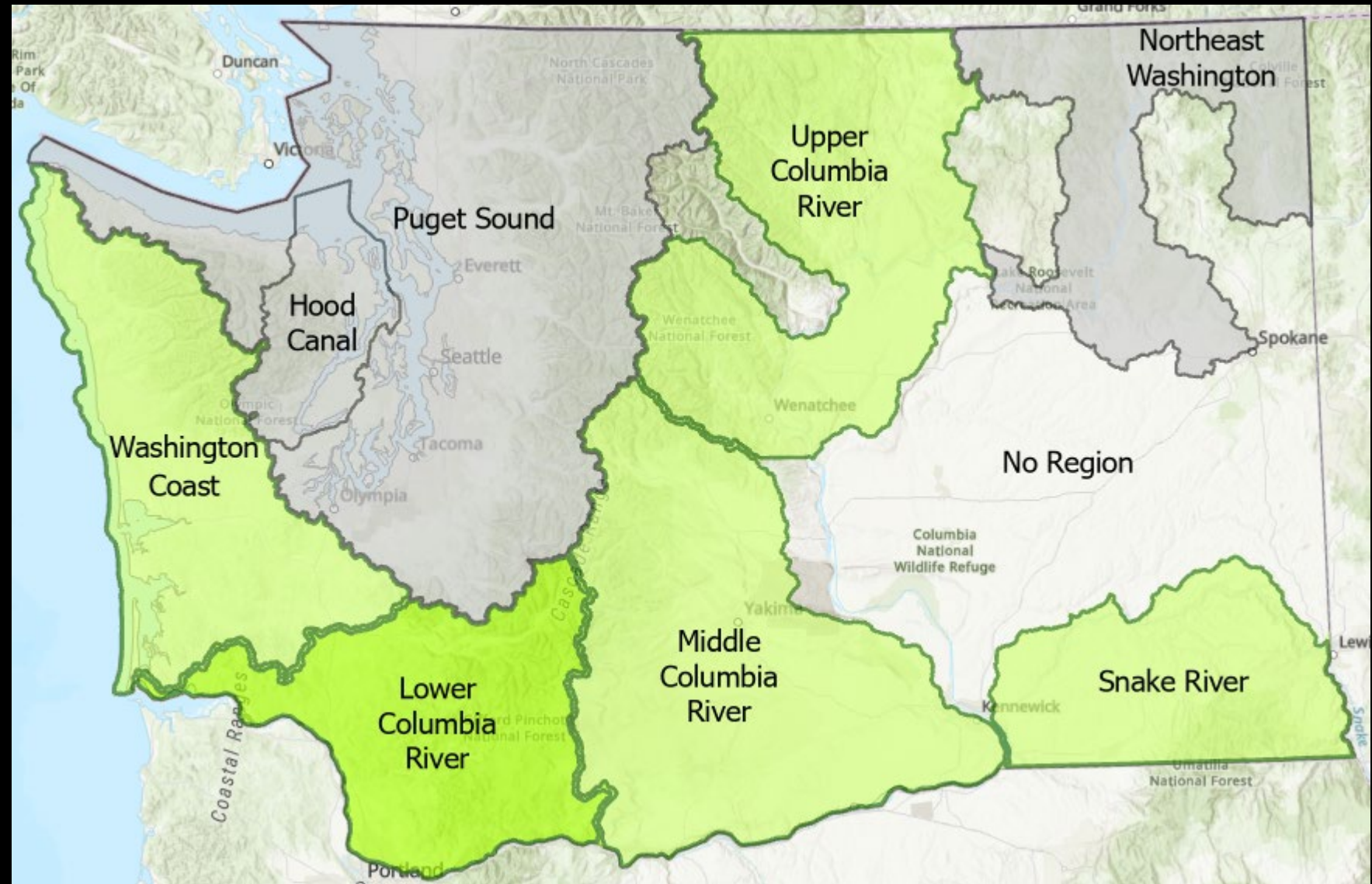
Current Efforts

- WA DOT fish passage program
- Brian Abbott Fish Barrier Removal Board
- Statewide fish passage prioritization strategy
- Salmon Recovery Regions (SRFB grants)
- ...and more



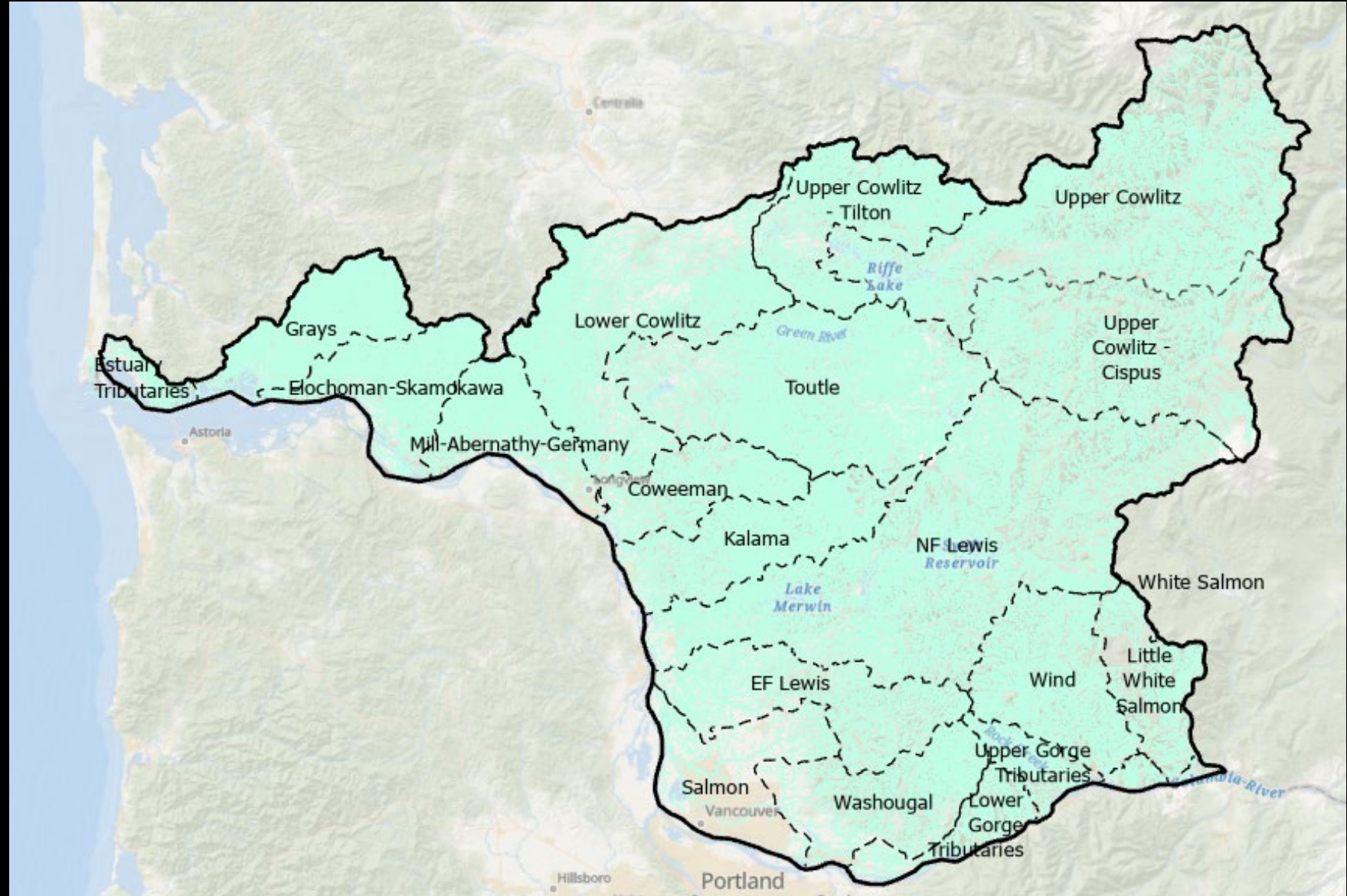
LCR Barrier Assessment

- Needed by Fish Recovery Board
- Complements work in other regions
- Data and results will be accessible to stakeholders



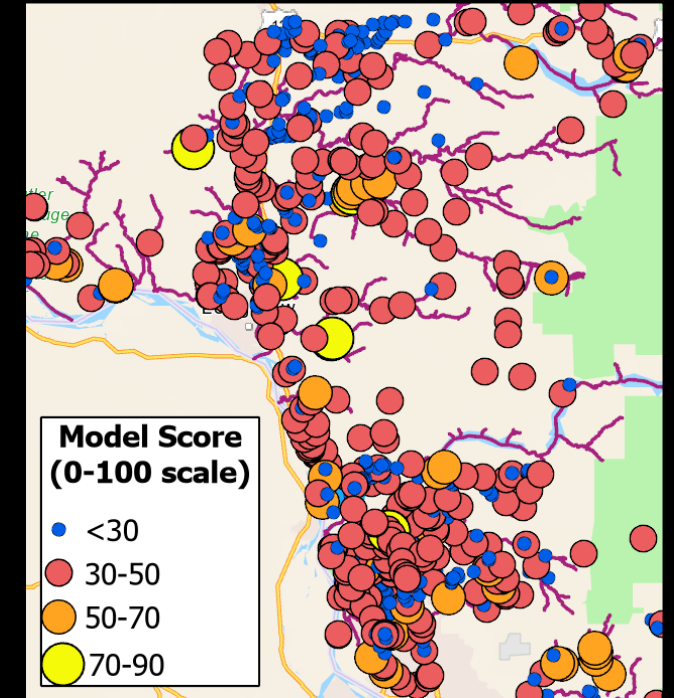
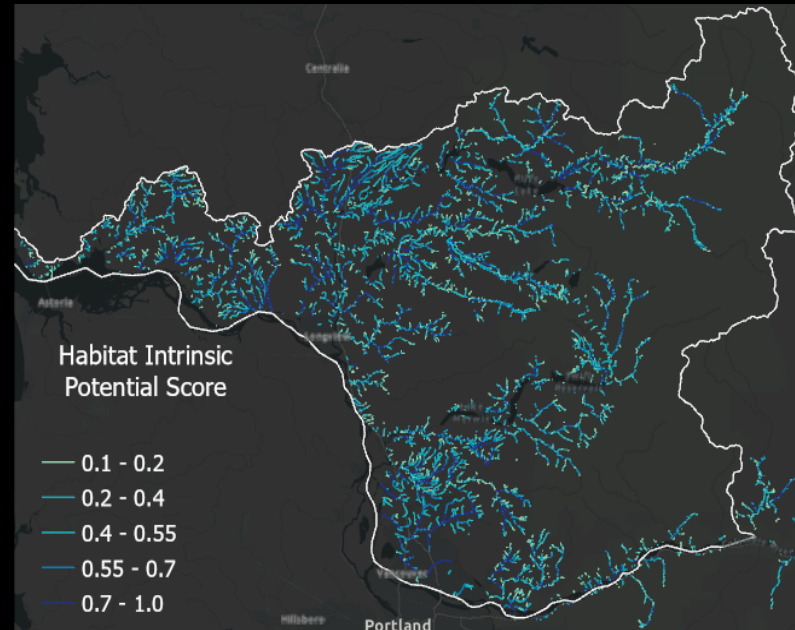
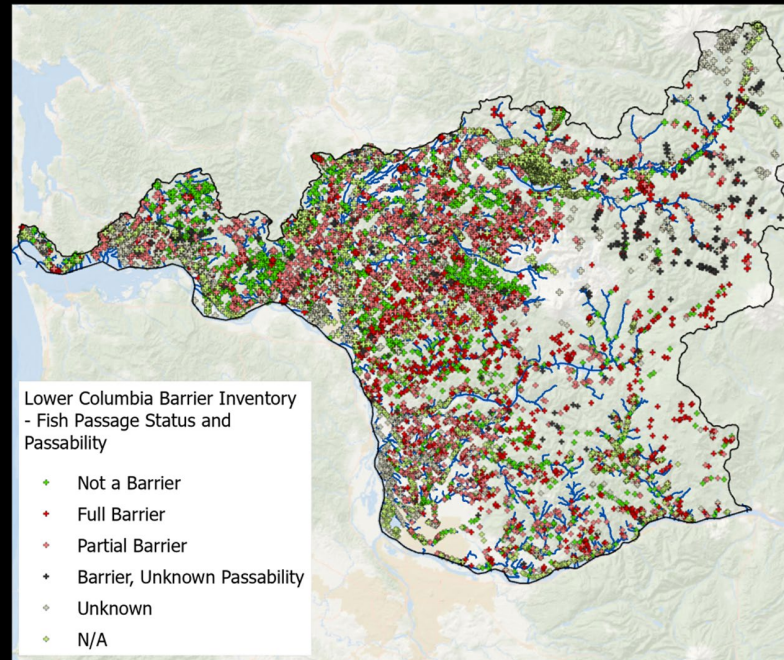
Project Components

- Barrier inventory
 - based on WDFW Statewide Inventory
- Decision support model
- Barrier passage assessments
 - field & GIS



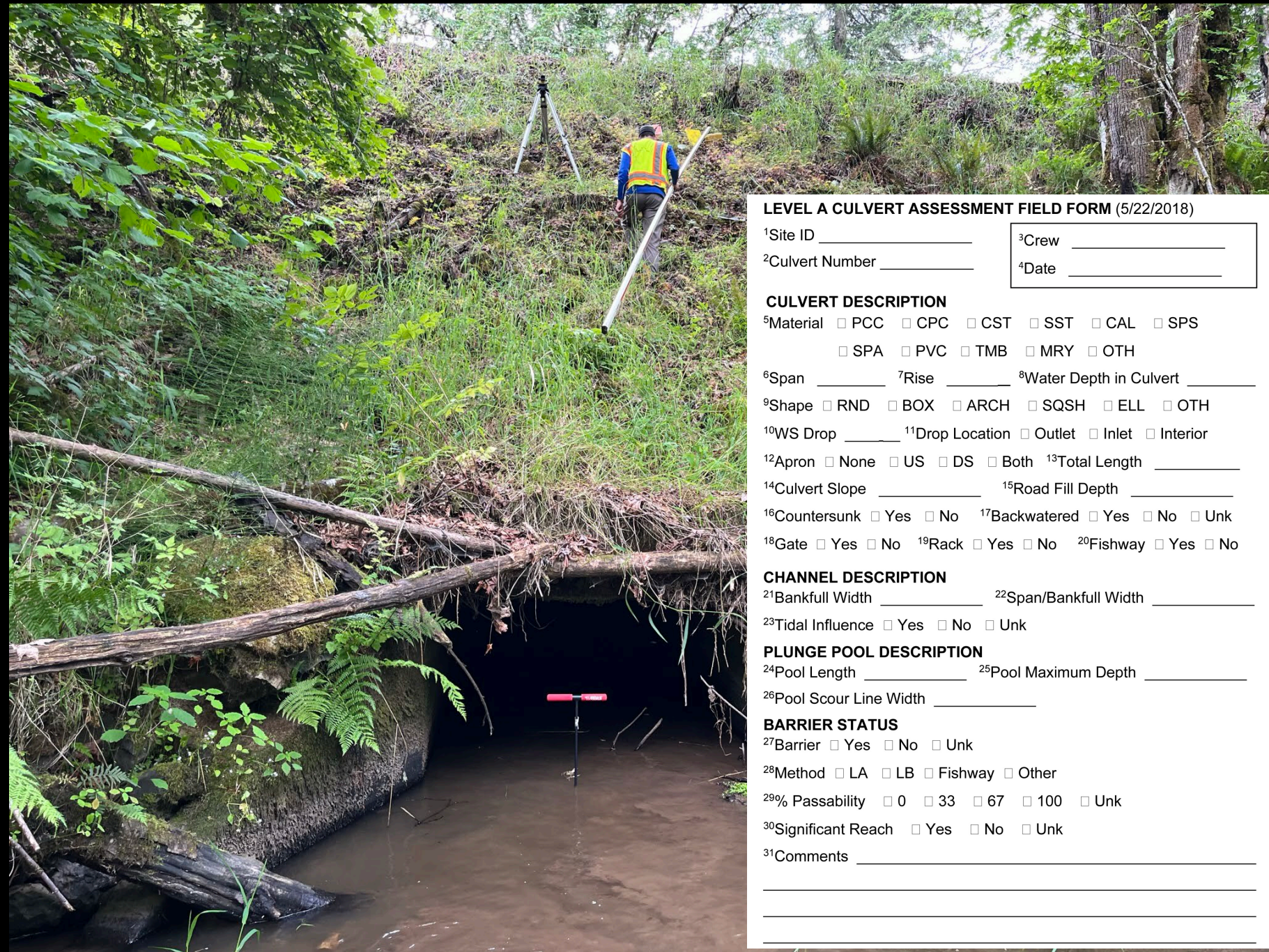
Decision Support Model

- Barrier information
 - location
 - severity
 - connectivity
- Habitat information
 - habitat quantity
 - habitat quality



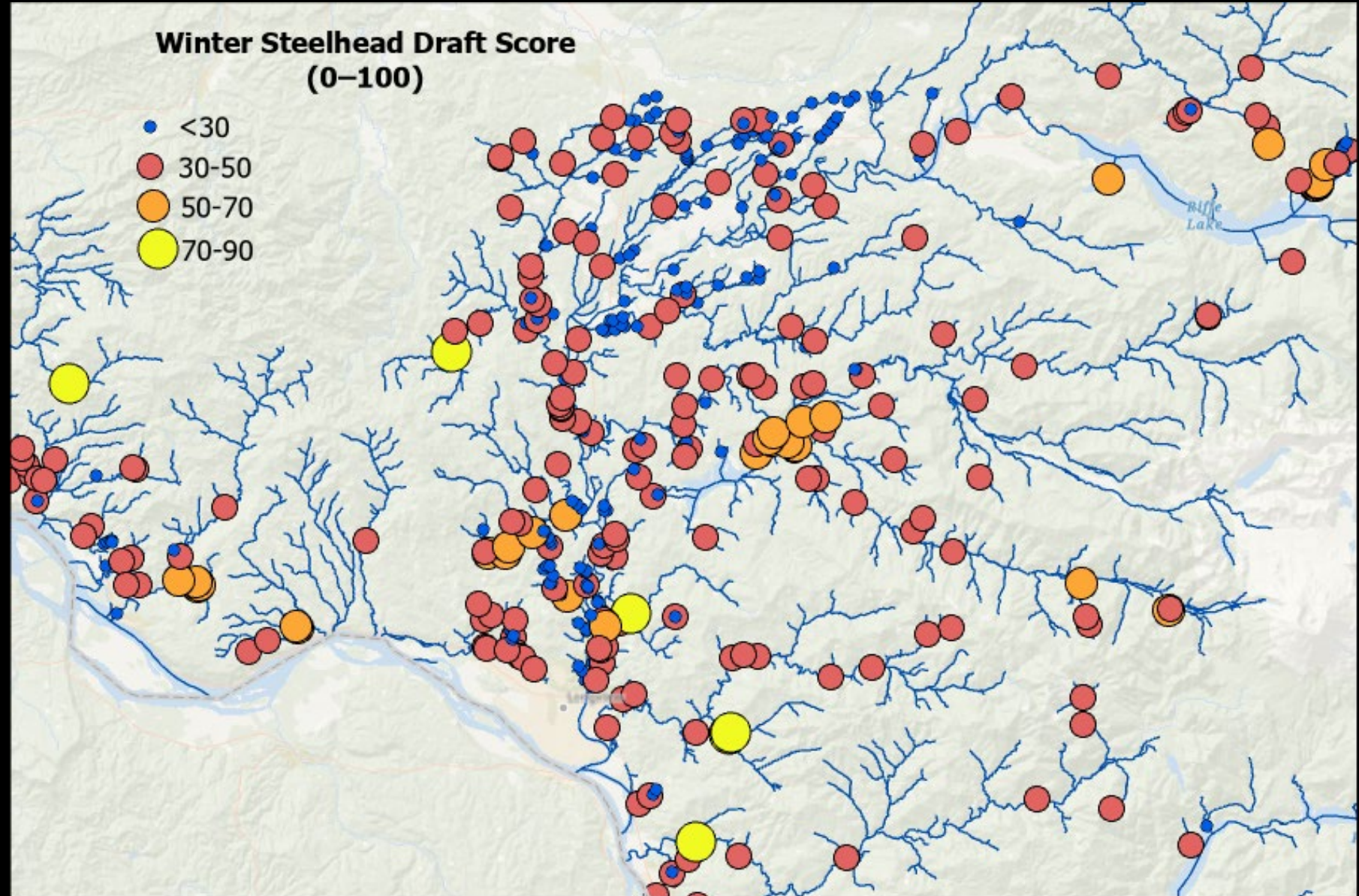
Passage Assessments

- Address gaps in barrier severity data
- 220 sites visited
- 100 WDFW Level A/B assessments



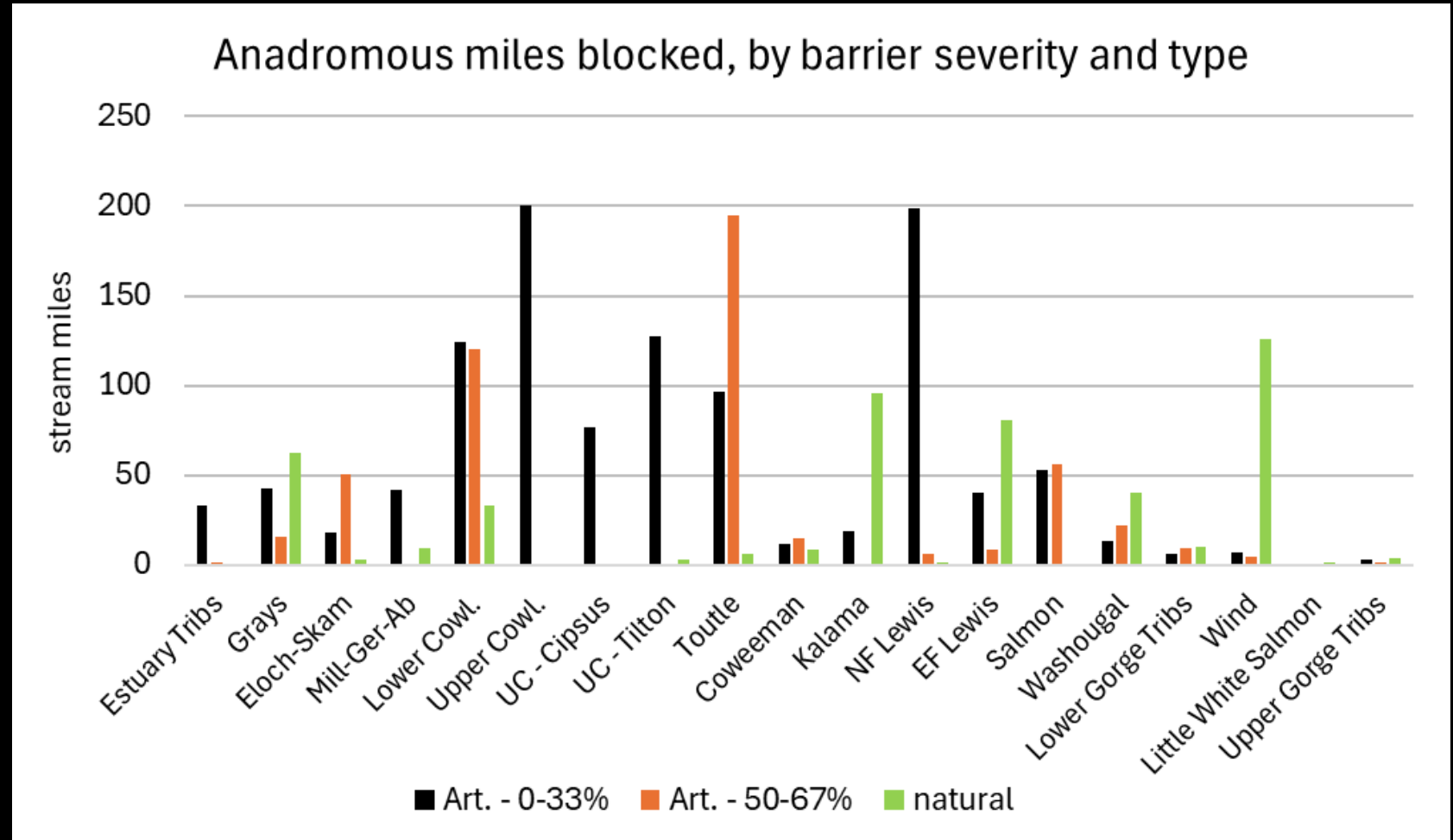
Prioritization Results

- Final map and scoring information will be available for wider use for strategic planning on LCFRB and EP websites



Results

- 872 barriers block passage to over 1,600 miles of potential habitat



Acknowledgements

- Aspect Consulting
 - Robyn Pepin
 - Kristen Jurica
- NOAA Fisheries
 - Damon Holzer
- WDFW
 - Samuel Harris
 - Kaylee Kautz
 - Julie Grobelny
 - Jane Atha
 - Steve Vanderploeg (R5)
 - Thomas Buehrens (R5)

